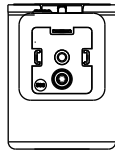
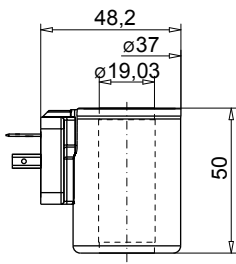
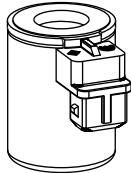
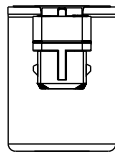
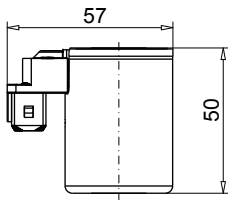


TYPE LISTE / DIMENSIONS / GENERAL SPECIFICATIONS



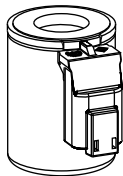
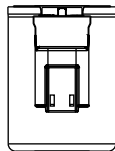
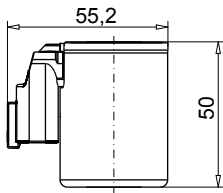
Execution: W **D** S37/19x50-...

- 3-poles 2 P+E
 - Protection class IP 65
- With corresponding mating connector (not included in delivery) and professional assembly.



Execution: W **J** S37/19x50-...

- 2-poles 2P
 - only for $U_N \leq 75$ VDC
 - Protection class IP 66
- With corresponding mating connector (not included in delivery) and professional assembly.



Execution: W **G** S37/19x50-...

- 2-poles 2P
 - only for $U_N \leq 75$ VDC
 - Protection class IP 67 and 69 K
- With corresponding mating connector (not included in delivery) and professional assembly.

Technical explanation see data sheet 1.1-400 and 1.1-410