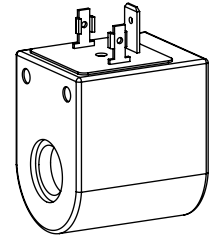


Solenoid coil K.E33 / 13 x 39
 according to DIN VDE 0580
 Protection class IP 65/67/69K

DESCRIPTION

The slip-on solenoid coil K.E33/13x39 is available in three different connection versions. The construction corresponds to the DIN VDE 0580-Norm. The housing and the connector socket is made of plastic material.

FUNCTION

With the combination of an armature tube the function of a switching solenoid results. The solenoid coils are available only as DC versions.

TYPE CODE

Plastic housing		K	<input type="checkbox"/>	E33 / 13 x 39 -	<input type="checkbox"/>	#	<input type="checkbox"/>
Connection execution							
Connector socket EN 175301-803/ISO 4400							
Connector Deutsch DT04-2P		<input type="checkbox"/>	<input type="checkbox"/>				
Coil execution							
Internal coil diameter 13 mm							
Coil length 39 mm							
Nominal voltage U_N	12 VDC	<input type="checkbox"/>	<input type="checkbox"/>	G12			
	24 VDC	<input type="checkbox"/>	<input type="checkbox"/>	G24			
Design-Index (Subject to change)							

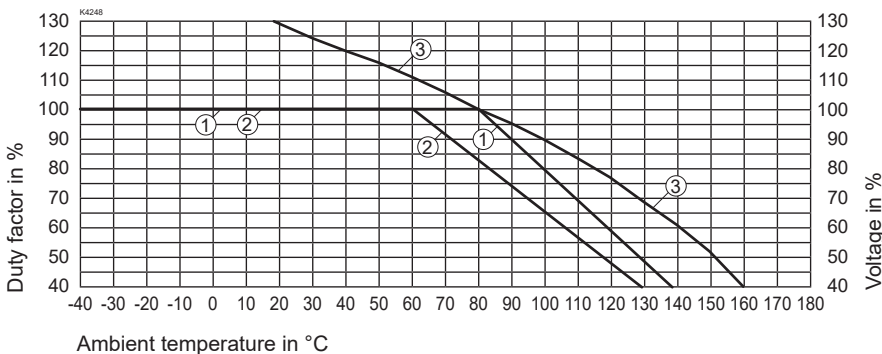
SPECIFICATIONS

Coil winding insulation class	H (180 °C)
Relative duty factor	100% DF/ED combined with armature tube and valve
Ambient temperature	See temperature curve
Corrosion protection	Plastic coated Black

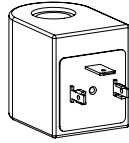
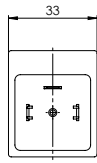
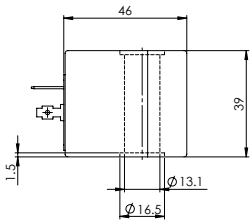
	12 VDC	24 VDC
Nominal power (W) (Switching function)	20	20
Nominal resistance (Ω)	7	28
Weight of solenoid coil (kg)	0,19	0,19

SAFE OPERATION

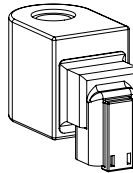
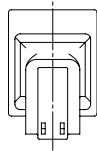
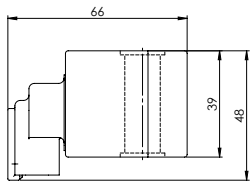
Caution: Because of the danger of over-heating the solenoid coil must only be commissioned together with an armature tube as well as with a valve.

DUTY FACTOR / TEMPERATURE
TEMPERATURE / VOLTAGE


TYPE LISTE / DIMENSIONS / GENERAL SPECIFICATIONS



- Execution: K **D** E33/13x39-...
- 3-poles 2 P+E
 - Protection class IP 65
- With corresponding mating connector (not included in delivery) and professional assembly.



- Execution: K **G** E33/13x39-...
- 2-poles 2P
 - only for $U_N \leq 75$ VDC
 - Protection class IP 67 and 69 K
- With corresponding mating connector (not included in delivery) and professional assembly.

Technical explanation see data sheet 1.1-400 and 1.1-410