

SD7 AMPLIFIER AND CONTROL ELECTRONICS

DIGITAL AMPLIFIER AND CONTROLLER MODULE

Type	SD7
Interface	Analogue CANopen / J1939 Profibus DP HART
Supply voltage	12 VDC or 24 VDC
Adjustable via PC (USB) The amplifier module is optionally available with a manual control on the front panel	
Snaps onto top-hat rail	



SD7 amplifier or controller module

DESCRIPTION

Digital amplifier or controller module for top-hat rail mounting for the control of proportional or ON/OFF valves with one or two solenoids. The parameterisation is carried out by means of the menu-controlled parameterisation and diagnosis software PASO from Wandfluh (USB interface) or optionally with a manual operation on the front panel.



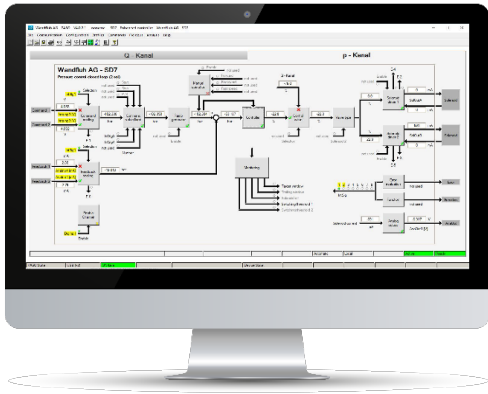
Hydropower application example



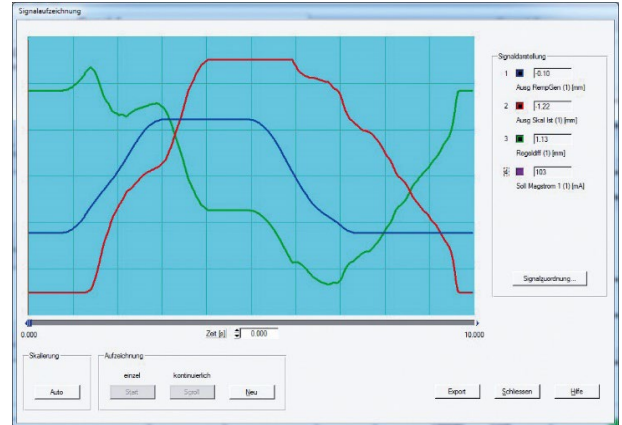
Application example pressing, stamping, bending



CONFIGURATION OF THE ELECTRONICS

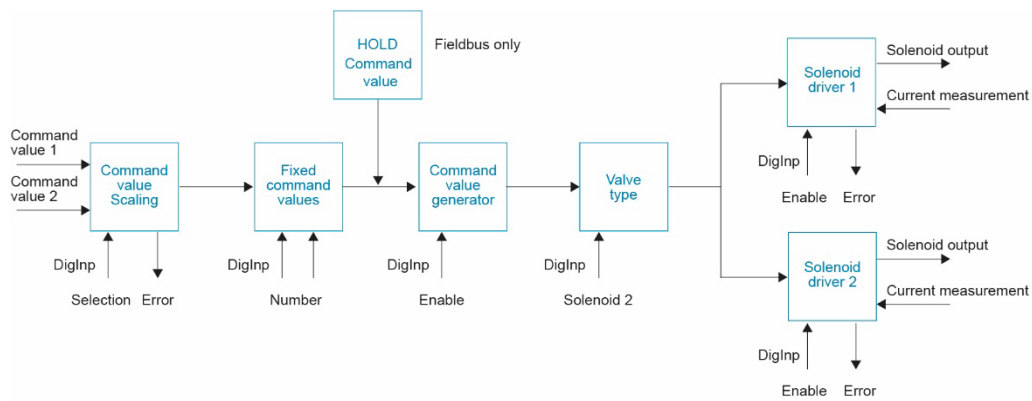


Intuitive parameterisation software PASO



Integrated real-time analysis tool in the PASO software

PASO SCHEME AMPLIFIER



PASO SCHEME CONTROLLER

